



SOULAB TEKNINDO GEMILANG
Laboratory & Engineering Technologies

Product Catalogue



<https://soulab-teknindo.com/>



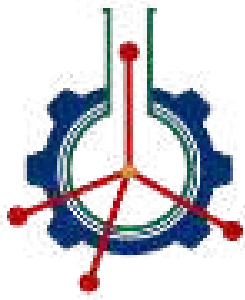
0541 2525 985 / 0811 5167 555



sales@soulab-teknindo.com

JI P.M Noor Perum Pondok Surya Indah
Blok.CA No.16B Sempaja Utara,
Samarinda, Kalimantan Timur 75119





SOULAB TEKNINDO GEMILANG
Laboratory & Engineering Technologies

ABOUT COMPANY

We are a distribution company specializing in laboratory, life science, instrumentation, and process technologies. We have a wide range of solutions of products and services to provide our customer's needs with excellent quality and outstanding support.

We are empowered by professionals and a dedicated team to handle our customers. we believe our presence will have an impact to increase customer productivity, improving human resources performance, producing a better-quality product, and making the world healthier and have a better future.



Table of Contents

01	Products Offered
02	PALL
03	Linde
04	Thermo Fisher Scientific
05	Eppendorf
06	Mettler Toledo
07	Buchi
09	Anton Paar
10	Ohaus
11	Soulogy
13	Chemical, Reagent Kit & Standard Solution
14	Process Monitoring & Online analyzer



Products Offered

- 01** **Analytical Equipment**
- 02** **Analytical Instrument**
- 03** **Sample Preparation**
- 04** **Furniture & Interior**
- 05** **General Lab**
- 06** **Glassware**
- 07** **Consumable**



LABORATORY

ACHIEVE OPTIMAL RESULTS MOLECULAR
PURIFICATION AND CHARACTERIZATION, MEDIA PREP,
ANALYTICAL CHEMISTRY AND MICROBIOLOGY
PROCESS



FILTERS

Improve fluid quality and achieve lowest maintenance costs with **Pall®** filters.



FILTERING DEVICES

Filter chemistries and devices for a multitude of applications.

Linde

LABORATORY

Making our world
more productive

He/CO₂/Ar

He/CO₂/Ar

0

GASES

Over 50 gases in more than 170 grades to for any requested application in laboratory.

GAS EQUIPMENT

Gas handling, distribution and storage equipment to help in work safely and productively



TRACE ELEMENTAL ANALYZER

AAS : Flame, Graphite Furnace, Dual Atomizer
ICP : ICP-OES, ICPMS, ICP-MSMS, ICP-HRMS



CHROMATOGRAPHY

Gas Chromatography :

GC standard, GC System / Custom,
GCMS, GCMSMS, GC-HRMS

Liquid Chromatography :

U-HPLC, LCMS, LCMSMS, LC-HRMS

Ion Chromatography :

HPIC, ICMS, IC-ICPMS

CDS : Chromatography Data System
(Integrated Software).



ORGANIC ELEMENTAL ANALYZER

N/Protein Analyzer, CS Analyzer, CHN
Analyzer, CNS Analyzer, CHNS/O Analyzer



SAMPLE PREPARATION

Automatic Solvent Extraction,
Solid Phase Extraction.



GENERAL LABORATORY

Water Purifier System, Waterbath, Hotplate
Stirrer, Furnace.

eppendorf

Liquid Handling



- Micropipette (Manual, Electronic, Positive displacement)
- Reagent Dispenser
- Pipette Controller
- Digital Burette

Sample Preparation



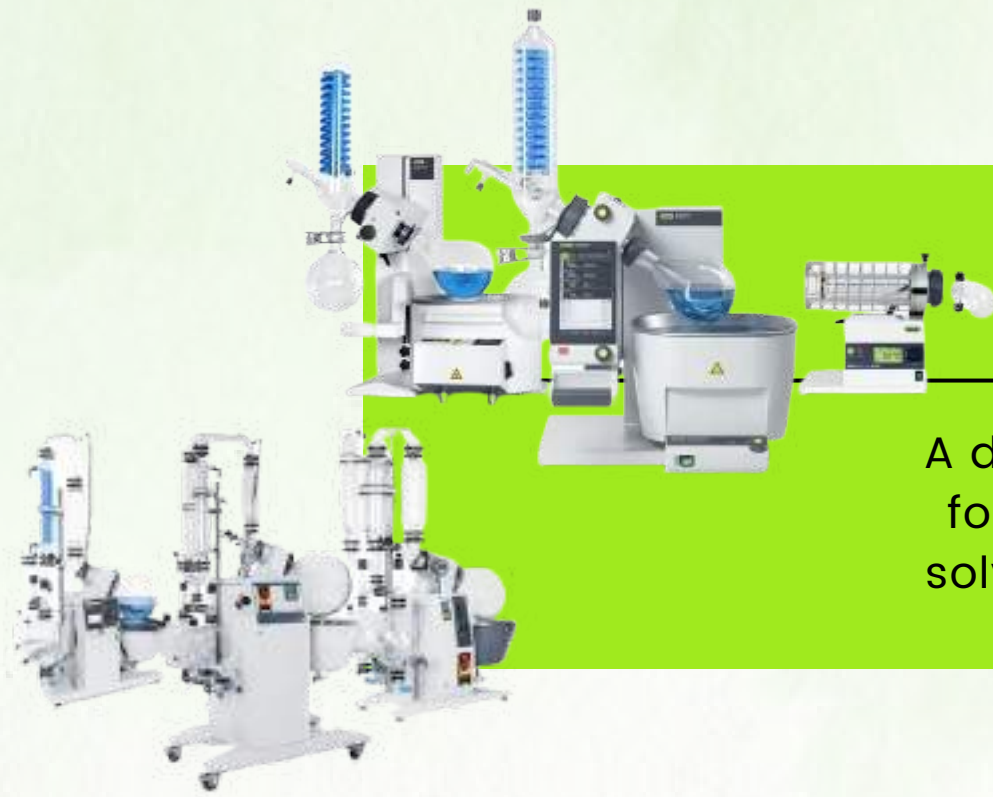
- Centrifuge
- Thermomixer
- Concentrator
- Evaporator
- CO2 Incubator
- Freezer
- Shaker

PCR

- Thermal Cycler
- PCR Cooler







Evaporation Unit

A device used in chemical laboratories for the efficient and gentle removal of solvents from samples by evaporation.

Steam Distillation Unit

The steam distillator involves bubbling hot steam through the mixture to be distilled, lowering the boiling points of the compounds.



Near Infrared Unit

Rapidly, accurately and reproducibly control the quality and nutritional facts of your feed and food samples.



Encapsulation Unit

Device with a versatile system for encapsulation of active ingredients and materials





Melting Point Unit

Instrument for manual (visual) determination of melting point, melting range, and boiling point at ambient temperatures +10 °C up to 400 °C

Digestion and Extraction Unit

Allow digestion of samples with concentrated acids or peroxides by heating up the probe.



Chromatography Unit

Feeding its output into a detector that reads the contents of the mixture (analytical) and separating the components of a mixture for use in other procedures.

Spray and Freeze Dryer Unit

Allow for the safe handling of samples with organic solvents.





Anton Paar

Density Meter

Density meters are instruments that measure the density of a sample liquid or gas. There's storage space for up to 10,000 measurements



Rheometer

A rheometer is an instrument that measures how matter flows in response to applied forces and quantifies its rheological properties.



Microwave Digester

The goal of microwave digesters is to completely break down samples such as metals, pharmaceuticals, plants, soil, or food so they are ready for elemental analysis.



Viscometer

Viscometer, instrument for measuring the viscosity (resistance to internal flow) of a fluid.



Balance

- Precision balance
- Analytical balance
- semimicro balance
- moisture balance
- portable balance



Water Testing



- Ph Water (benchtop, portable)
- Conductivity (Benchtop, portable)
- DO meter (Benchtop, Portable)
- Multiparameter (PH, ORP/Redox, Conductivity - TD-Partial salinity)

Centrifuge

- Multipurposes





Fume Hood Full Polypropylen



Fume Hood Full Steel Galvanized



Fume Hood Full Stainless Steel

Fume Hood

Prevent the release of hazardous substances into the general laboratory space by controlling and exhausting hazardous and/or odorous chemicals

Cabinet

Used as a surface for working at, working from or on which to place laboratory equipment and store laboratory materials.



Fixed Cabinet



C-Frame Structure With Moveable Cabinet



H-Frame Structure With Suspended Cabinet



Laminar Air Flow

Protect the working environment from dust and other airborne contaminants by maintaining a constant, unidirectional flow of HEPA-filtered air over the work area.

Biological Safety Cabinet

A primary engineering control used to protect user against biohazardous or infectious agents and to help maintain quality control of the material being worked.





Eye Wash

Eyewash stations are designed to flush the eye and face area only. The need for emergency showers or eyewash stations is based on the properties of the chemicals

Extraction Hood

Extraction hood is a device that removes airborne grease, combustion products, fumes, smoke, heat, and steam from the air by evacuation of the air and filtration.



Flooring

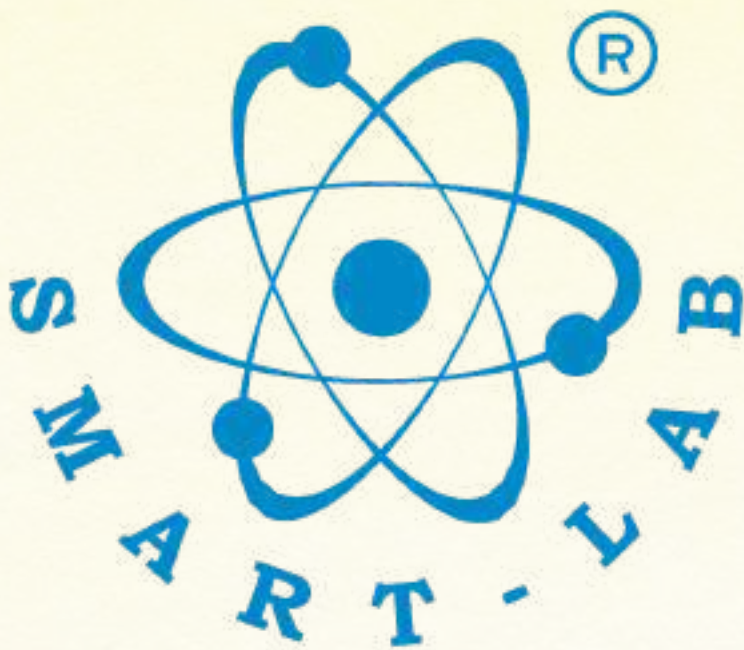
Floors in buildings provide strong level surface to support occupants, furnitures, and other equipments. There are various functional requirements of floors.

Gas Pipeline

Pipelines that collect products from sources, such as wells on land (gathering lines) or offshore, or from shipping, such as tankers for oil or liquefied natural gas (LNG).



CHEMICAL, REAGENT KIT & STANDARD SOLUTION



Be Right™



SIGMA-ALDRICH

MERCK



PROCESS MONITORING & ONLINE ANALYZER



Dosing Pump



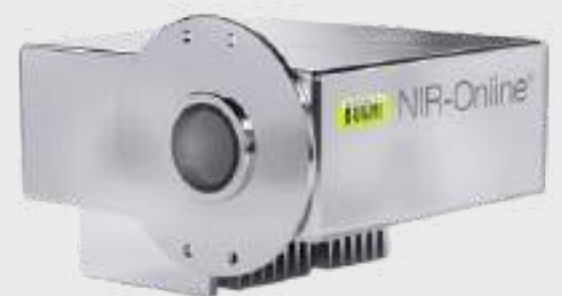
Continuous Emission Monitoring System



Online Gas Analyzer



Process Mass Spectrometer



NIR-Online Process Analyzer

Contact Us



<https://soulab-teknindo.com/>



0541 2525 985 / 0811 5167 555



info@soulab-teknindo.com



Jl P.M Noor Perum Pondok Surya Indah
Block CA NO.16 B Sempaja Utara,
Samarinda Kalimantan Timur. 75119

